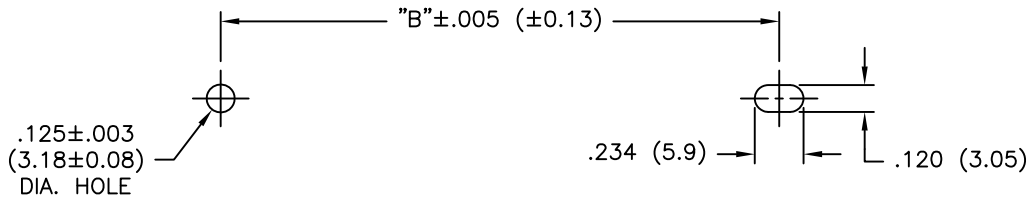
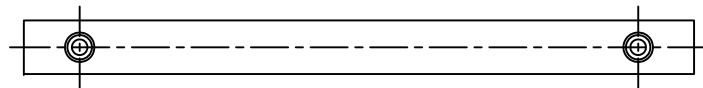
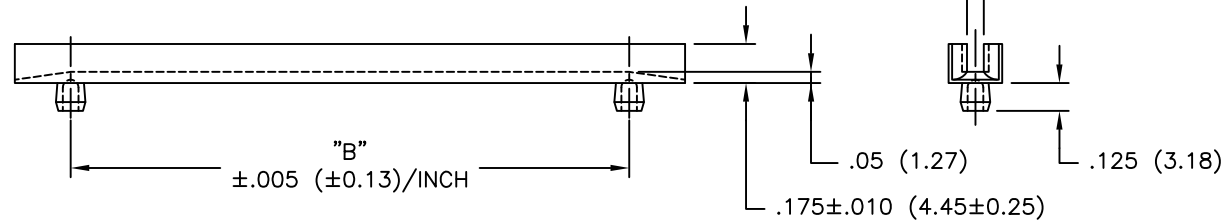
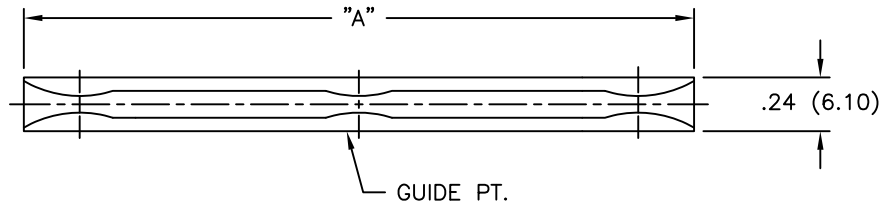


PART NO.	DIM. "A"	DIM. "B"	GUIDE PT.
RCGH-25	2-1/2 (63.50)	2 (50.80)	2
RCGH-30	3 (76.20)	2-1/2 (63.50)	3
RCGH-35	3-1/2 (88.90)	3 (76.20)	3
RCGH-40	4 (101.60)	3-1/2 (88.90)	4
RCGH-45	4-1/2 (114.30)	4 (101.60)	4
RCGH-50	5 (127.00)	4-1/2 (114.30)	4
RCGH-55	5-1/2 (139.70)	5 (127.00)	5
RCGH-60	6 (152.40)	5-1/2 (139.70)	5



RECOMMENDED MOUNTING HOLES  
IN 1/16" (1.6) NOMINAL THICK  
PANEL

NOTES:

- MATERIAL: NYLON 6/6 (RMS-01).  
FLAME RETARDANT NYLON (RMS-19).  
AVAILABLE BY SPECIAL ORDER ONLY.
- COLOR: NATURAL.

TITLE: RACK CARD GUIDE, TYPE "H"			DWG IN IN (MM)	FINAL
TOLERANCES UNLESS NOTED .XX=±.010 .XXX=±.005 FRAC=±1/64 ANG=±1°	FILE # RCGH	DWN: P.B.	APP:	
	MAT'L: SEE NOTES	DT: 06-22-94	DT:	PART #
	RE: RICHCO, INC.	RICHCO INC. PO BOX 804238, CHICAGO, 60680 (773) 539-4060		SEE TABLE
				PRINT TYPE CA

REV	DESCRIPTION	ENGR	DATE
D	SEE CO 200237 FOR CHANGES	SK	09.09.08
C	SEE ECN #831 FOR CHANGES	SM	08.09.04
B	CHANGED FILE NUMBER	SM	05.11.01
A	FR-NYLON RMS-19 ADDED	J.L.	4.1.98